

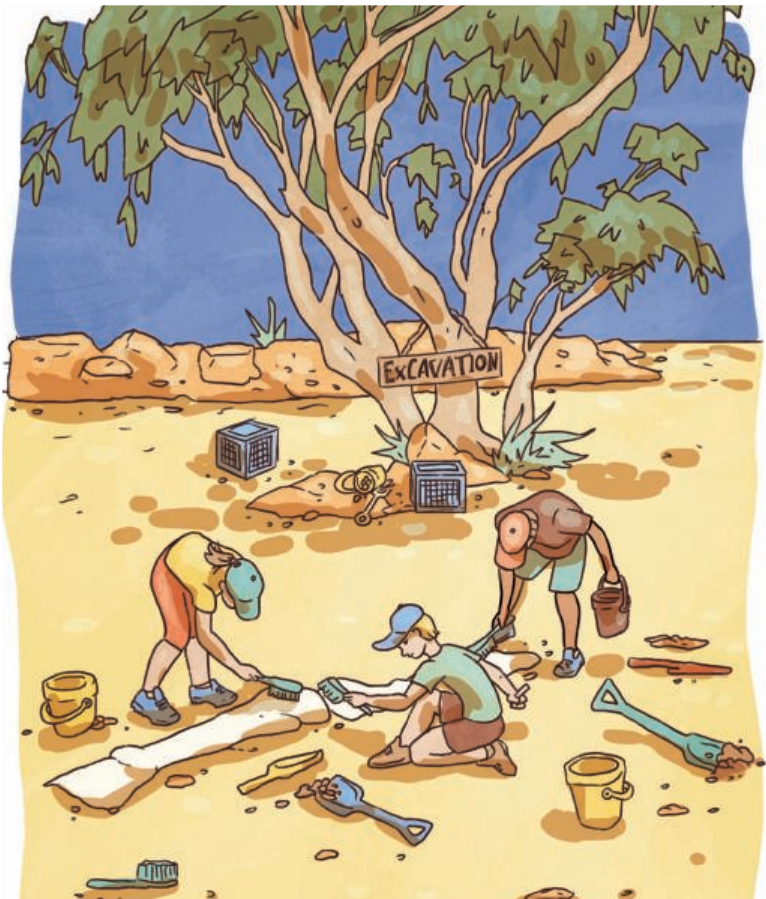
Reception Centre and  
*Australovenator.*



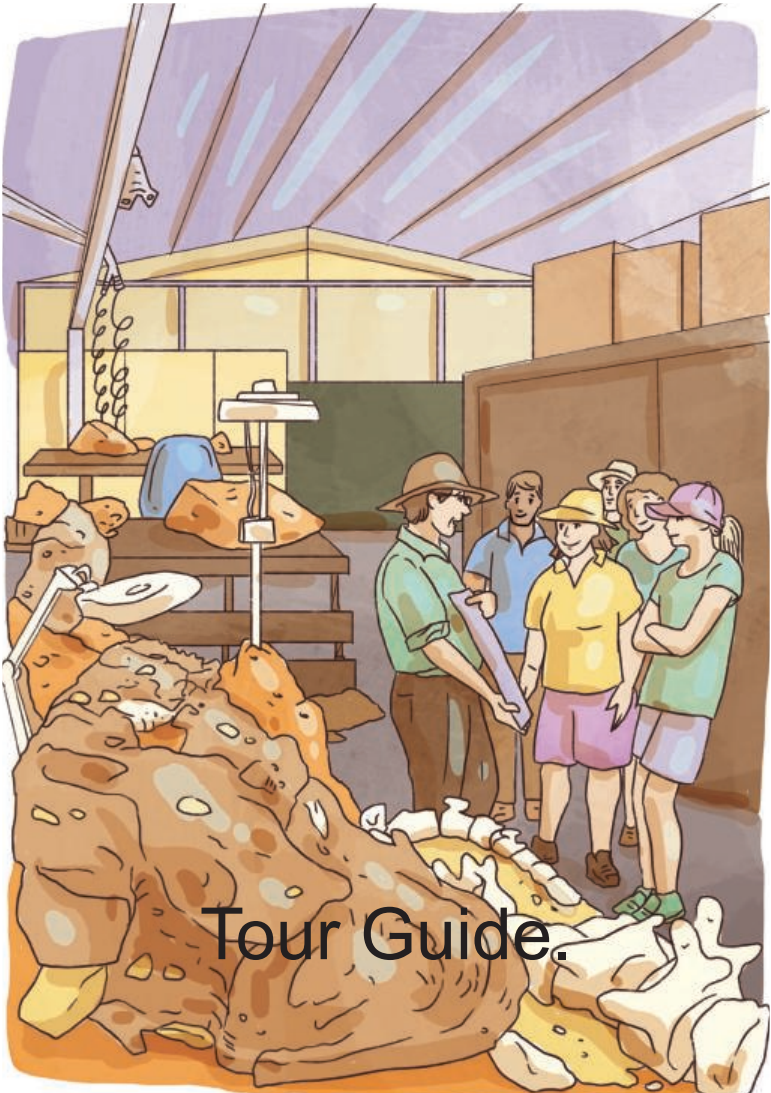
Reception Centre desk.



Fly-level sign.



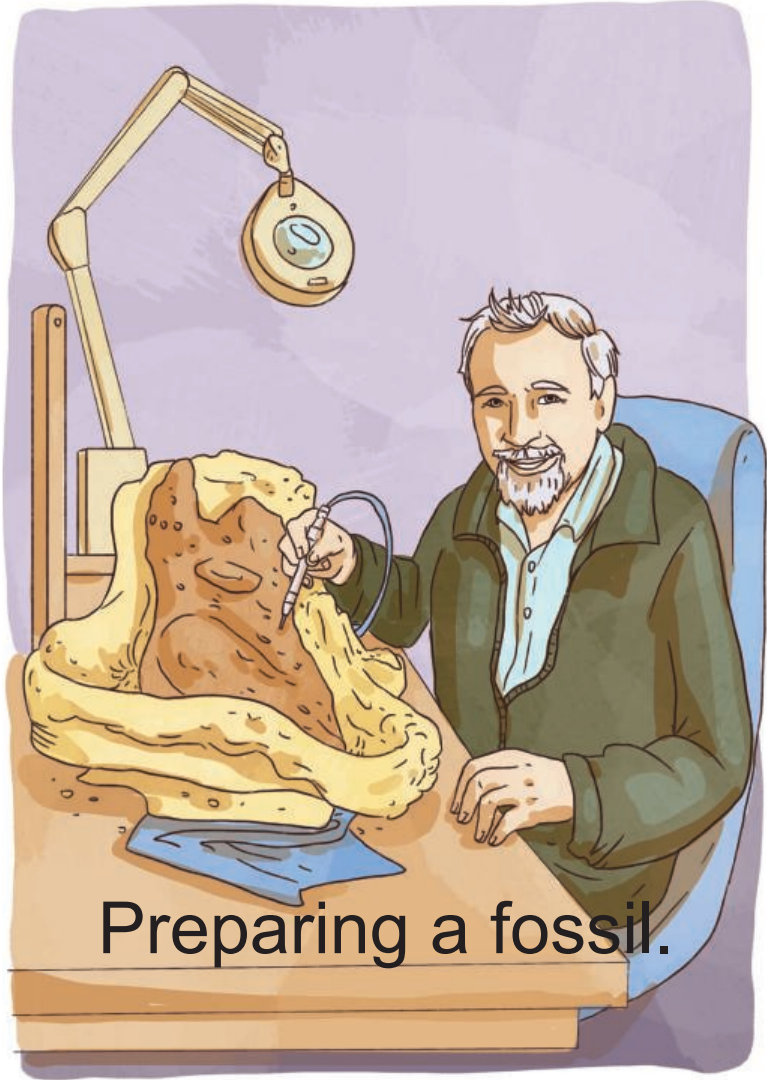
Dinosaur-excavation  
sandpit.



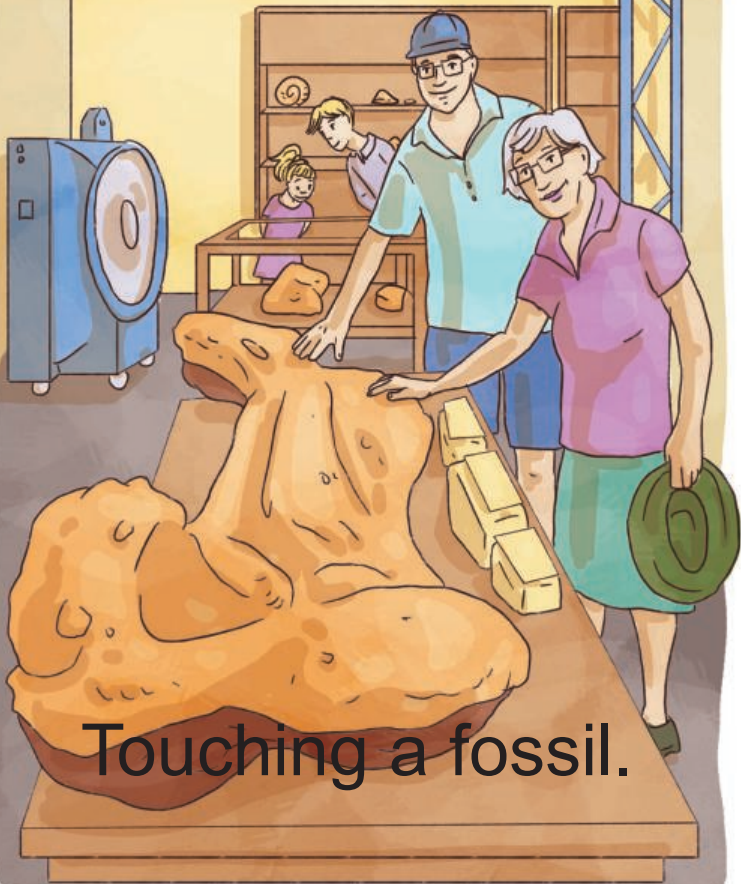
Tour Guide.



**Fossil Preparation  
Laboratory.**

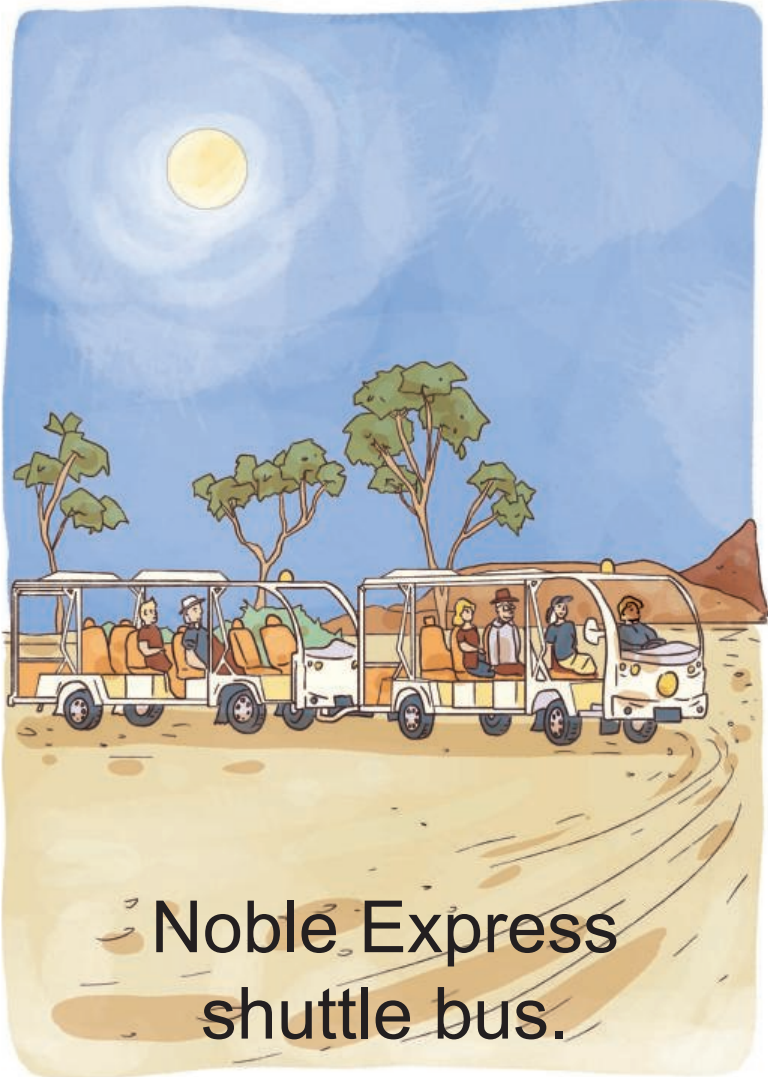


Preparing a fossil.

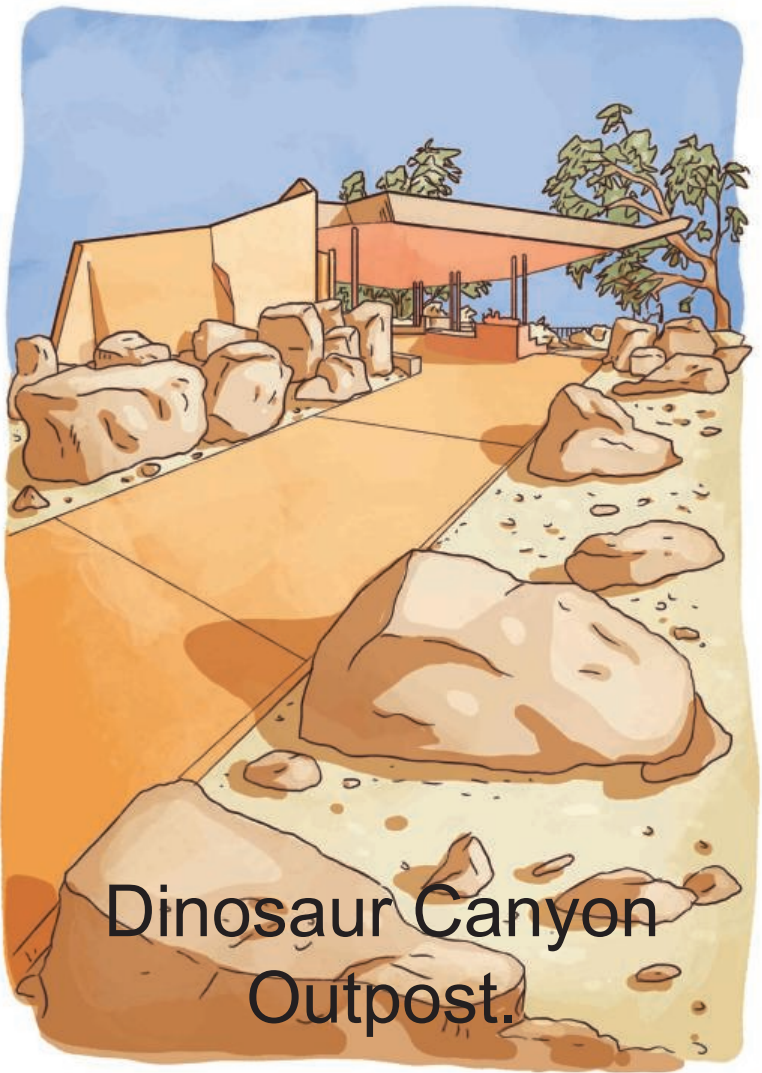


Touching a fossil.





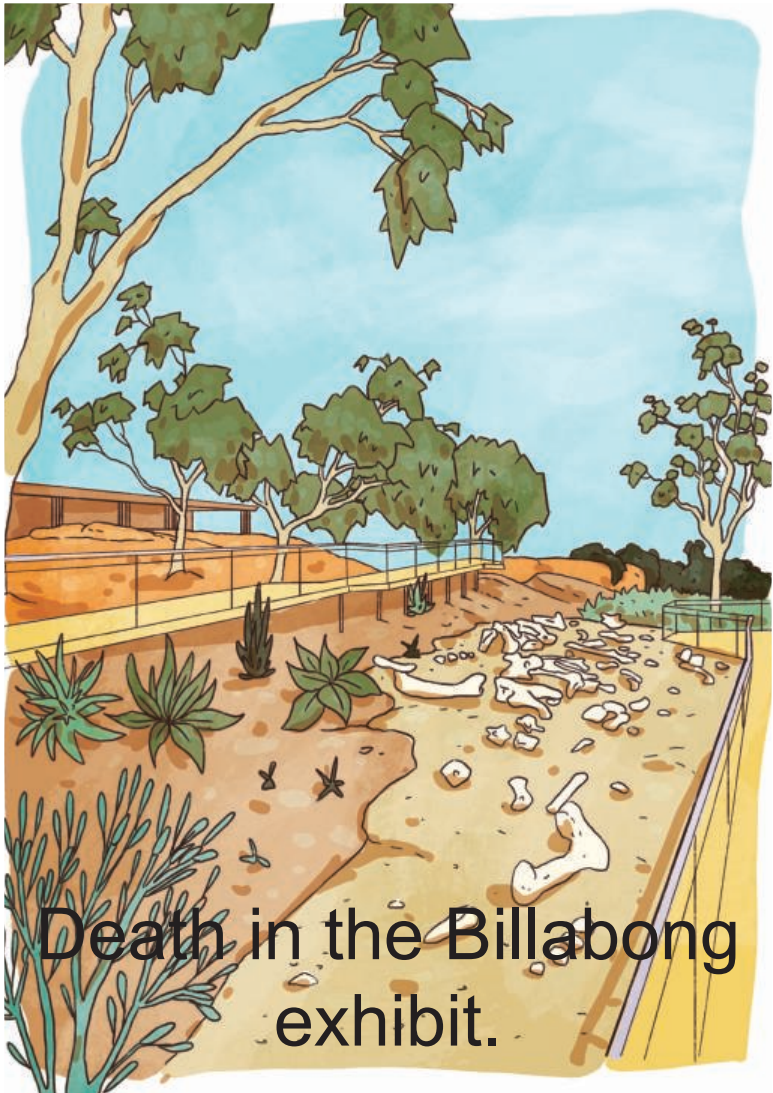
**Noble Express  
shuttle bus.**



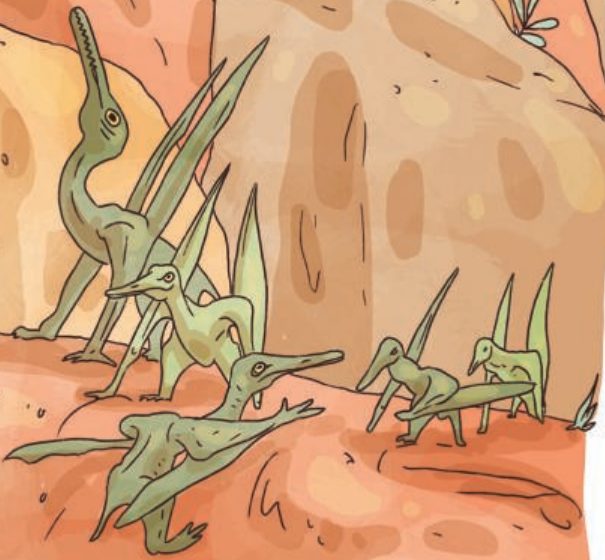
Dinosaur Canyon  
Outpost.



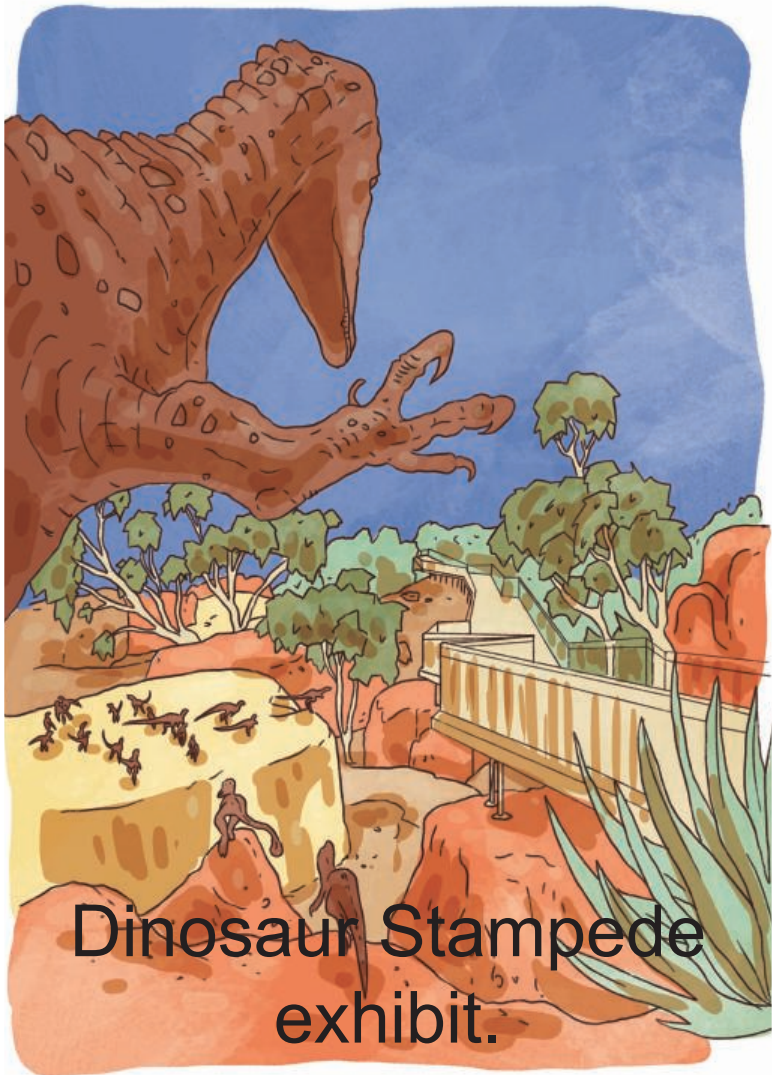
**Gordo the Guardian of  
the Bridge.**



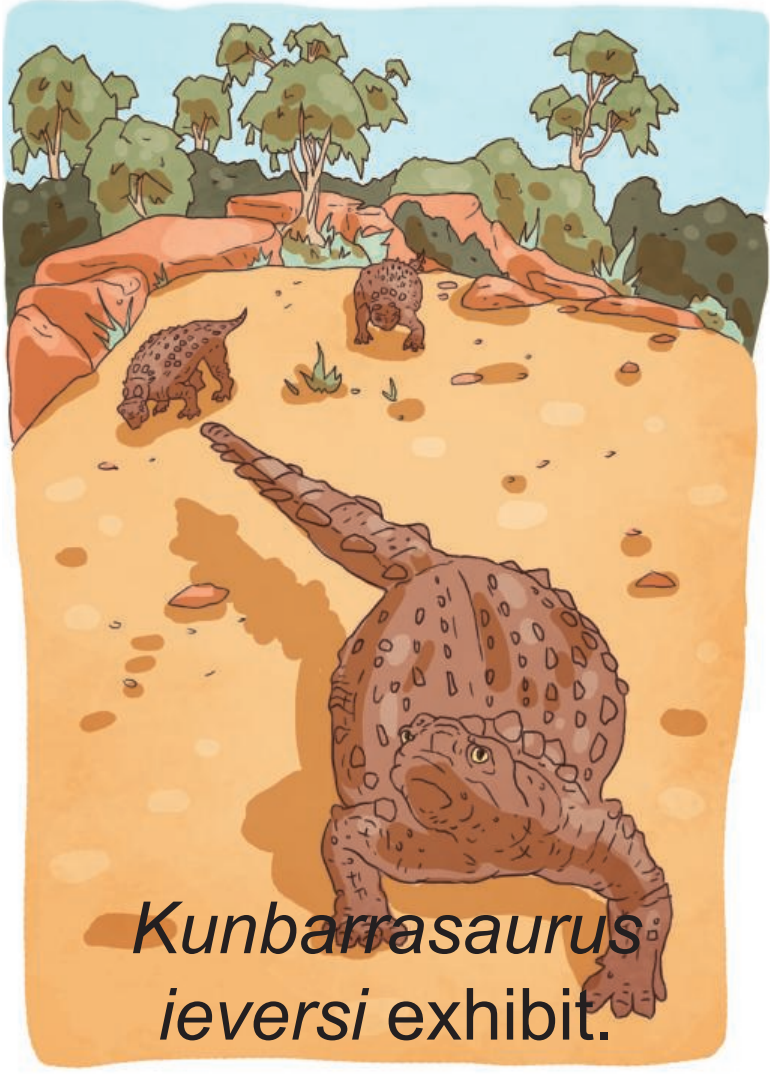
**Death in the Billabong  
exhibit.**



*Pterodactylus* Family  
exhibit.



Dinosaur Stampede  
exhibit.



*Kunbarrasaurus  
ieveri* exhibit.



Tracing a plaque.





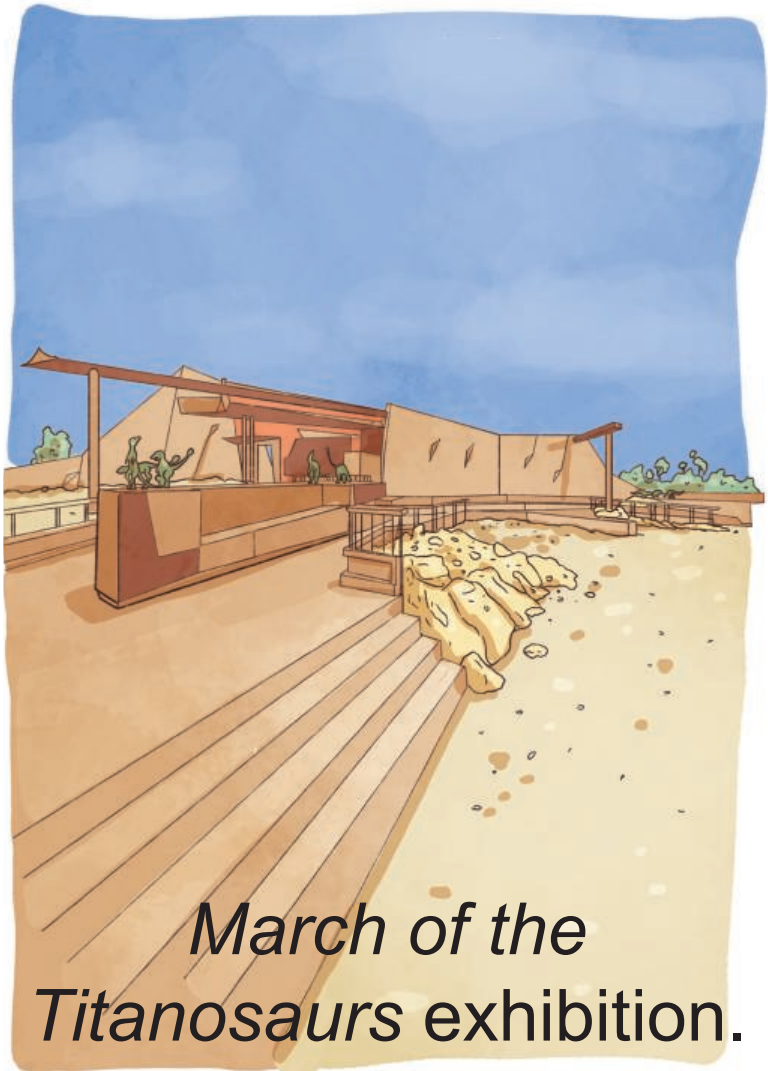
*Diamantinasaurus*  
exhibit.



Theropods.



Ornithopods.



*March of the  
Titanosaurs exhibition.*

An illustration of a long, narrow, covered walkway or tracksite. The floor is a mix of orange and brown, with numerous dark brown, irregular shapes scattered across it, representing tracks or debris. The walkway is flanked by low walls and railings on both sides. The ceiling is a light brown color with several horizontal lines, suggesting a covered structure. The overall style is a simple, hand-drawn illustration.

Snake Creek  
tracksite.



Gondwana Stars  
Observatory.